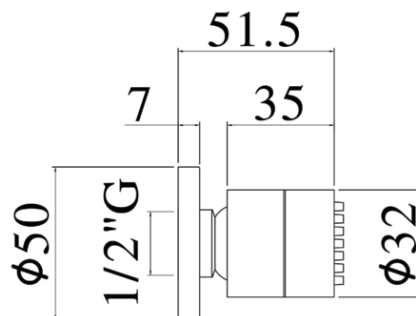
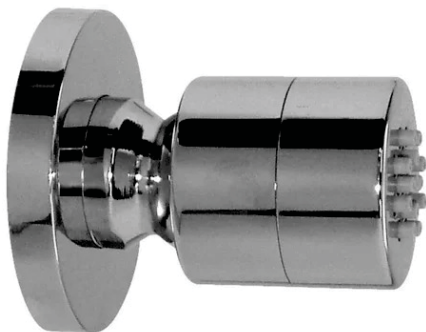


soffioni doccia - shower heads



DESCRIZIONE | DESCRIPTION

- Soffione laterale TONDO in metallo:
- anticalcare
- con rosone Ø50mm
- con snodo 1/2"G
- ROUND metal shower head:
- antiscala system
- with wall plate Ø50mm
- 1/2"G swivel joint

ARTICOLO | ARTICLE

ZSOF 061

- Ø32mm
- Ø32mm

FINITURE | FINISHES

ZSOF 061

CR- Cromo | Chrome

RAPPORTO PROVA PORTATA | FLOW RATE REPORT

	Uscita outlet	Pressione / Pressure (bar)									
		0,5	1	1.5	2	2.5	3	3.5	4	4.5	5
Portata / Flow rate (l / min)		7.06	9.94	12.23	14.16	15.78	17.35	18.78	20.06	21.29	22.5

DOCUMENTI TECNICI | TECHNICAL DOCUMENTS

DIAGRAMMA
PORTATA 1ISTRUZIONI
INSTALLAZIONEESPLOSO
RICAMBI
ZSOF 061