



Codice 181-U...

Categoria 1-81u

Prodotto

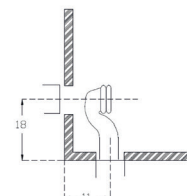
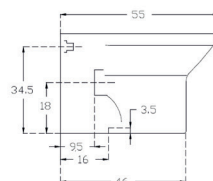
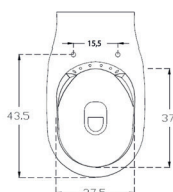
SANITARI FILO MURO SERIE GELSO

DESCRIZIONE DEL PRODOTTO

VASO FILO MURO GELSO

181-U450

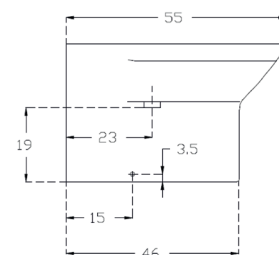
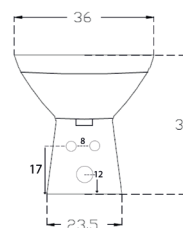
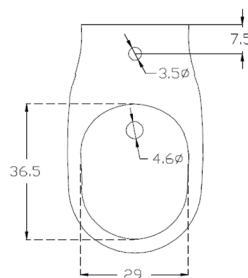
Vaso rimless filo muro in ceramica bianca. Fissaggi e curva tecnica inclusi.



BIDET FILO MURO GELSO

181-U350-R

Bidet sospeso in ceramica bianca. Fissaggi inclusi.



SEDILE WC VASO GELSO

181-U900 \ U901 SLIM

Sedile in termoindurente (Forma tipo 7) dedicato a casa ceramica Linpha serie Gelso. Dimensioni: Lunghezza cm 42,5 - 43,5; Larghezza cm 36. A sgancio rapido.

