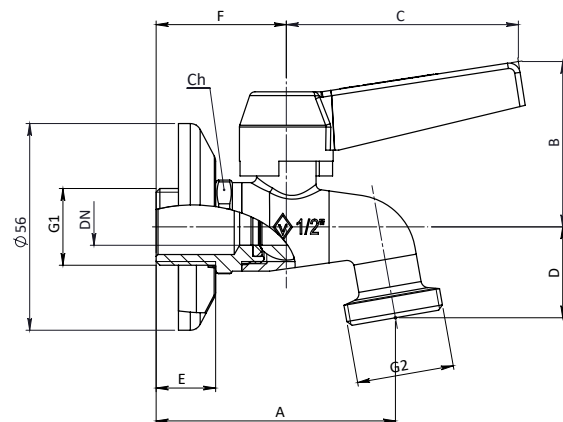
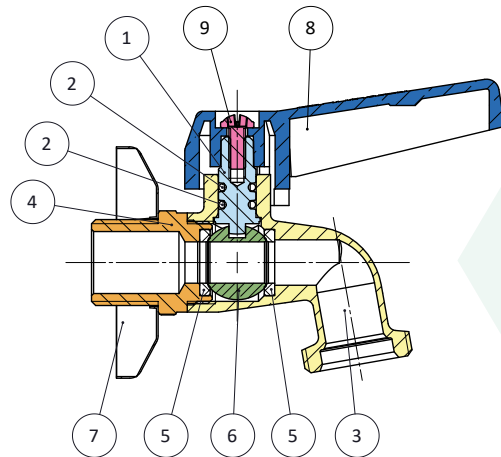


ART. 892	SPECIFICATIONS		APPLICATION	TECHNICAL NOTES
	Series	892	Assembly in rigid pipe system	Item designed, manufactured and tested in accordance to: EN 1074:2004/11:2006 and EN 1074-3:2004 Manufacturing processes managed in accordance to: EN ISO 9001
Thread ends	Male-Male UNI ISO 228/1	Nominal pressure (PN) in bar: 10		
<i>Chrome-plated washing machine ball valve with rosette, Size from 1/2"x3/4".</i>	Orifice	10 mm	KV: flowrate coefficient m ³ /h	All valves comply with directive 2014/68/UE and are 100% tested with electrically controlled pneumatic seal test.
	Actuator	90° rotation with mechanical stop	Direction of flow: one direction Temperature range: -20 °C / +90°C	
	Operator	Chrome-plated aluminum handle	Use: Water	Manufactured in brass alloy compliant with EN 12165-CW617N-DW.



N°	Descrizione	Description	Materials	Treatment	Q.ty
9	Perno	Stem	CW614N		1
5	O-Ring	O-Ring	NBR70sh		2
1	Corpo	Body	CW617N	Chrome-Plated	1
2	Manicotto	End connection	CW617N	Chrome-Plated	1
3	Guarnizione sede sfera	Ball seal	PTFE		2
4	Sfera	Ball	CW617N	Ni+Cr	1
6	Rosone	Rosette	AISI 304	Chrome-Plated	1
7	Leva	Handle	ALUMINUM	Chrome-Plated	1
8	Vite	Screw	STEEL	Zinc-plated	1

DN	G	G1	A	B	C	D	E	F	Ch	PN
10	1/2"	3/4"	64	44.5	62.5	24.5	16	35	25	10

N° Disegno / Drawing Nr	Misure / Size		UFFICIO TECNICO
892	1/2" x 3/4"		