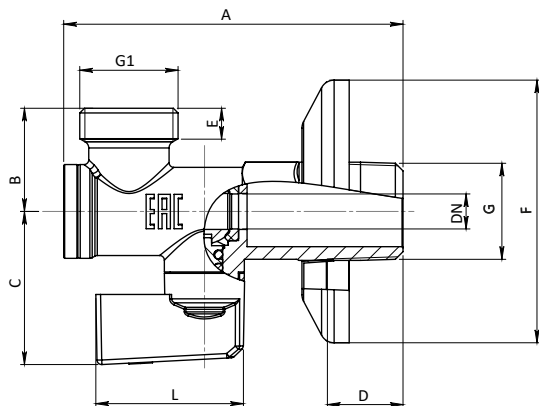
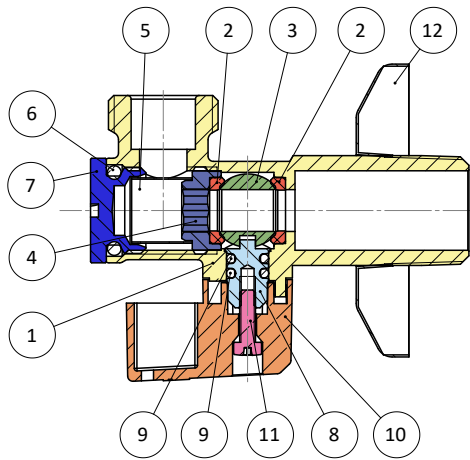


<b>ART. 771</b>	<b>SPECIFICATIONS</b>		<b>APPLICATION</b>		<b>TECHNICAL NOTES</b>		
	<b>Series</b>	771	Assembly in rigid pipe system		Item designed, manufactured and tested in accordance to: EN 13828:2004 Manufacturing processes managed in accordance to: EN ISO 9001		
	<b>Thread ends</b>	Male-Male UNI ISO 228/1	Nominal pressure (PN) in bar:10				
	<i>Compact chrome-plated angle ball valve with filter and rosette. Size from 1/2"x3/8 to 1/2"x1/2"</i>	<b>Orifice</b>	8 mm	KV: flowrate coefficient m <sup>3</sup> /h		All valves comply with directive 2014/68/UE and are 100% tested with electrically controlled pneumatic seal test.	
		<b>Actuator</b>	90° rotation with mechanical stop	Direction of flow: one direction			
<b>Operator</b>		ABS handle	Temperature range: -20 °C / +90°C		2 YEARS warranty.		
			Use: Water		Manufactured in brass alloy compliant with EN 12165-CW617N-DW.		



N°	Descrizione	Description	Materials	Treatment	Q.ty
1	Corpo	Body	CW617N	Nickel-Plated	1
2	Guarnizione sede sfera	Ball seal	PTFE		2
3	Sfera	Ball	CW617N	Ni+Cr	1
4	Ghiera	Brass ring	CW614N		1
5	Filtro 400 micron	Filtro 400 micron	AISI 304		1
6	O-Ring	O-Ring	NBR70sh		1
7	Tappo	Cap	CW614N		1
8	Perno	Stem	CW614N		1
9	O-Ring	O-Ring	NBR70sh		2
10	Leva	Handle	ABS	Chrome Plated	1
11	Vite	Screw	Fe	Zinc-Plated	1
12	Rosone	Rosette	AISI 304	Chrome Plated	1

DN	G	G1	A	B	C	D	E	F	L	Ch	PN
8	1/2"	1/2"	70	22	32	15	6,5	56	31,5	19	10

N° Disegno / Drawing Nr	Misure / Size		<b>UFFICIO TECNICO</b>
771	1/2"x3/8" - 1/2"x1/2"		