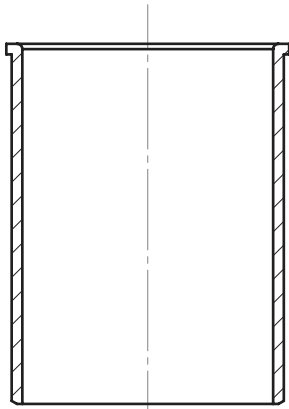
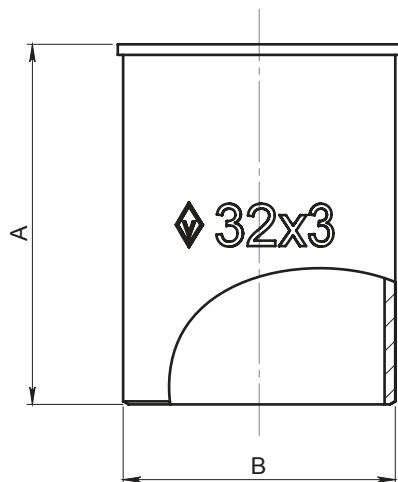



ART.6200A	SPECIFICATION		APPLICATION	TECHNICAL NOTES
	<i>Wall female elbow.</i> <i>Size from Ø20x2 to Ø32x10.</i>	Series	6200A	Assembly in rigid pipe system
Thread ends			Nominal pressure (PN) in bar:	Conformity with DIN 8076 - EN 1254/3 - DVGW GW 335 UBA BWGL - UNI EN 681-1 and EN 682
Orifice		from Ø20 to Ø110 mm	KV: Flowrate coefficient m ³ /h Direction of flow: as desired	
Technical additions		Temperature range: -20°C / +80°C	2 YEARS warranty	
		Use: Water	Manufactured in brass alloy compliant with EN 12165-CW617N-DW	



N°	Descrizione	Description	Materials	Q.ty
1	Bussola interna	Insert	CW614N	1



Ø PIPE	PIPE thickness	A	B
40	3,7	40	32
50	4,6	45	41

N° Disegno / Drawing Nr 6200 A	Misure / Size Ø20x2- Ø110x10		UFFICIO TECNICO
--	--	---	-----------------