

# Codice Dianflex: 334-F304



## ELECTROFUSION 90° ELBOW

1203/01-001

### PE100, 4mm Automatic Pin

PE100 Electrofusion 90° Elbow with 4mm automatic pin. For gas, water, mining and irrigation applications. All fittings are manufactured in virgin PE100 black polyethylene.

Electrofusion fittings enable utilities, designers and contractors to create fully welded pipe networks.

The production quality, reliability and flexibility of electrofusion fittings provides the certainty and peace of mind needed for polyethylene pipe jointing.

#### Product description:

Electrofusion 90° Elbow for gas, water, mining and irrigation applications. 4mm automatic pin, PE100, Water PN16, Gas 10 Bar. Temperature range on electrofusion fittings -10°C/+40°C

#### Standards:

The Fusion Group of Companies have over 140 local and international product approvals as well as ISO 9001 and ISO 29001 quality management system approvals.

Fusamatic branded electrofusion fittings are 3rd party certified against the product standards listed (other product certificates are available upon request). Note: Regional variations may apply to some of the standards referenced, please contact us for further details.

- 3<sup>rd</sup> party approved to EN ISO 15494
- 3<sup>rd</sup> party approved to EN 12201-3
- 3<sup>rd</sup> party approved to EN 1555-3
- 3<sup>rd</sup> party approved to ISO 4437-3
- 3<sup>rd</sup> party approved to ISO 4427-3

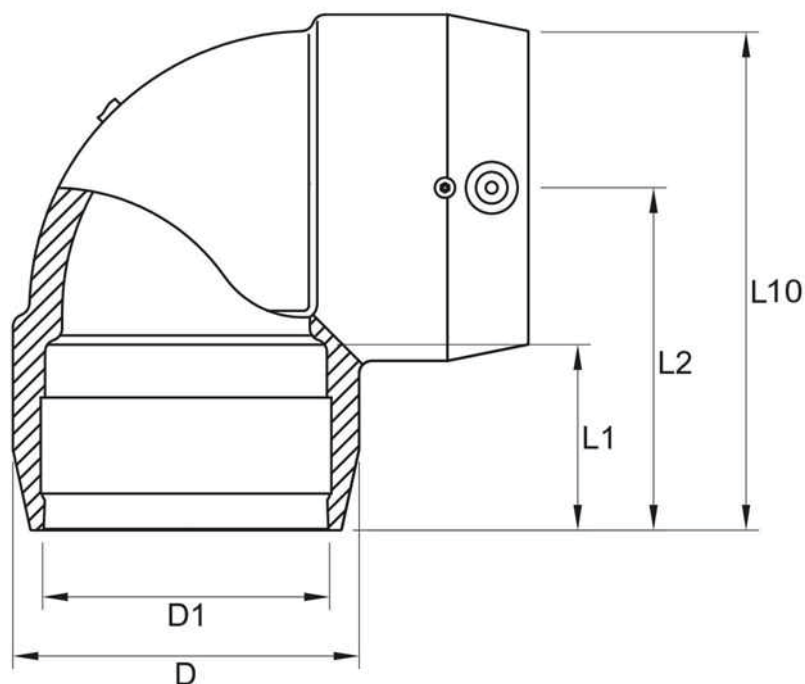
#### Features:

- Fusamatic branded
- PE100 Black
- Water PN16 / Gas 10 Bar (Depending on PE pipe welded to and any local pipeline pressure regulations)
- 4mm automatic pin
- All electrofusion fittings are individually numbered and the barcodes and QR code provide full individual fitting traceability right back to all raw materials and critical components
- Welding barcode in accordance to ISO 13950. Traceability barcode in accordance to ISO 12176-4
- Fusamatic pin provides a totally automatic method to ensure the correct welding parameters are used
- Manual welding parameters moulded into the body of the fitting
- Permanently marked batch number and rising pin fusion indicators

#### Accessories:

- Electrofusion Control Box, Pipe Cutters, Pipe Scrapers, Pipe Alignment and Rerounding Clamps, Generators
- Fusion Assist





**Reference nos. and dimensions:**

Ref. No.	Fitting Size mm	L10 mm	L1 mm	L2 mm	D mm	D1 mm	SDR Range	Fusion Time Secs	Cooling Time Mins	Theoretical weight / kg
EBKHFA25X90	25-90	76	41	60	35	25	11	30	5	0.066
EBKHFA32X90	32-90	84	40	62	44	32	11	60	5	0.099
EBKHFA40X90	40-90	91	42	65	52	40	11	50	5	0.12
EBKHFA50X90	50-90	103	45	72	63	50	11	90	5	0.168
EBKHFA63X90	63-90	123	50	84	80	63	11 - 17.6	35	5	0.31
EBKHFA90X90	90-90	165	60	109	113	90	11 - 17.6	90	10	0.683
EBKHFA110X90	110-90	204	73	135	137	110	11 - 17.6	160	15	1.154

**Comments:**

Check that both pipe(s) and fitting to be joined are compatible, only compatible materials should be joined together. Check PN and SDR rating marked on fitting and compare with that of the pipe. If in doubt, seek advice from the manufacturer. Correct installation procedures should be followed.