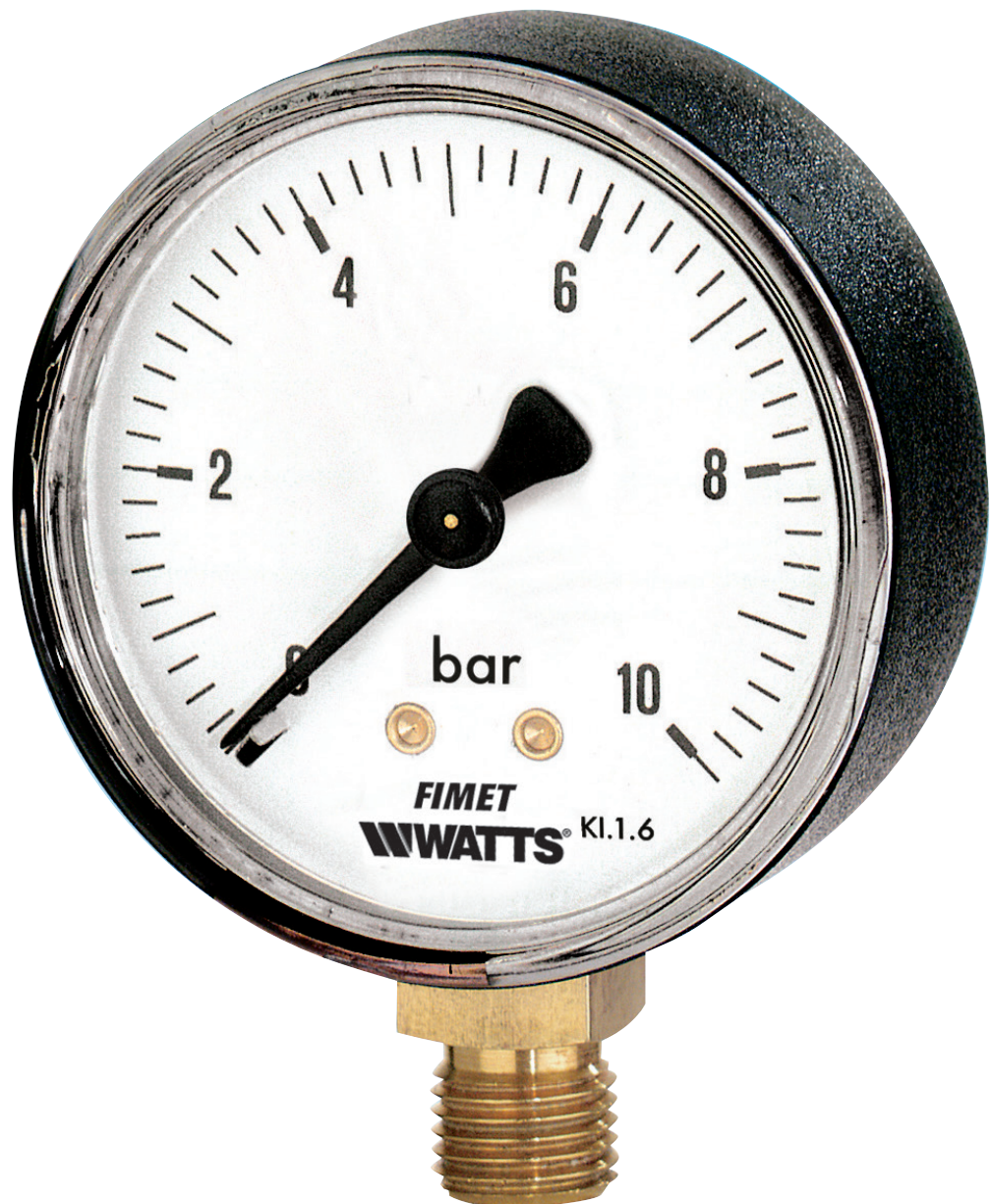


M1

Codice Dianflex: 350-7252

Bourdon tube pressure gauges

Technical Data Sheet



Description

Dry black steel case powder coated bottom entry. For industry, gases and liquids not viscous, not aggressive and not crystallising.

Options



M1-80/T1 Steam

DN80 pressure gauges.

Part No	Pressure Range	Connection	Options*	Box/Master	Min. order
PA4806BK00	0-6 bar	G3/8B	C+T1+VV	1/50	_____
PA4816BK00	0-16 bar	G3/8B	C+T1+W	1/50	_____

Customizations per minimum order quantity

Customizations	Model
AT - PTFE sealing ring on parallel threads only	M1-40/50/63/80/100
R - PTFE sealing ring on parallel threads only	M1-50/63/80/100/R
T2 -40°C/+90°C - Aluminium dial + aluminium pointer (QA+I)	M1-40/50/63/80/100/T
T1 -40°C/+120°C - Aluminium dial + aluminium pointer + bezel ring + instrument glass (QA+I+A+VV)	M1-40/50/63/80/100/T
Z - Restrictor hole 0.5 mm	M1-40/50/63/80/100
A+V - Chrome-plated bezel ring + instrument glass window CC - Chrome case	M1-40/50/63/80/100 M1-40/50/63/80/100
Customized dials, other scale ranges or connections on request	M1-40/50/63/80/100



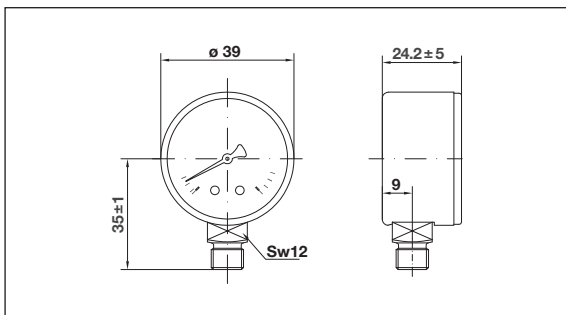
Features

Materials	M1-40 M1-50	M1-63 M1-80 M1-100
Case	Black steel, powder coated	Black steel, powder coated
Window	Clear plastic	Clear plastic
Dial	White plastic	White plastic
Pointer	Black plastic	Black plastic
Pressure connection	Cu-alloy, 12 mm flats	Cu-alloy, 14 mm flats
Pressure element	Bourdon tube Cu-alloy, soft soldered ≤ 60 bar C-type, > 60 bar helical type Sn-Ag soldered	Bourdon tube Cu-alloy, soft soldered ≤ 60 bar C-type, > 60 bar helical type Sn-Ag soldered
Movement	Cu-alloy	Cu-alloy

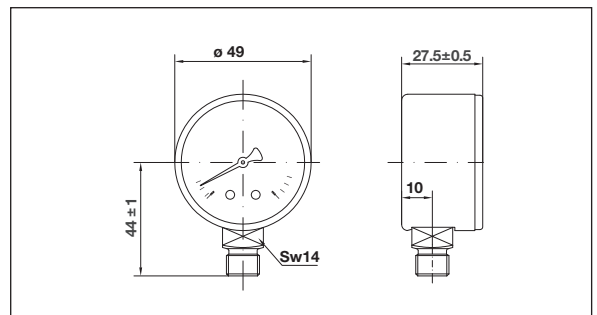
Technical features	
Design	EN 837-1
Working pressure	Steady: 75% of full scale value Fluctuating: 60% of full scale value Short time: full scale value
Temperature limits	Ambient: -40 ... +60°C Medium: +60°C maximum Storage: -40 ... +60°C
Temperature effect	Deviation from reference temperature (+20°C): $\pm 0,04\%/1K$ of the span
Accuracy class	cl. 2.5, cl. 1.6 on request
Degree of protection	IP 31 per EN 60 529/IEC 529
Individual weight:	
M1-40	0.060 kg
M1-50	0.095 kg
M1-63	0.115 kg
M1-80	0.170 kg
M1-100	0.255 kg

Overall dimensions (mm)

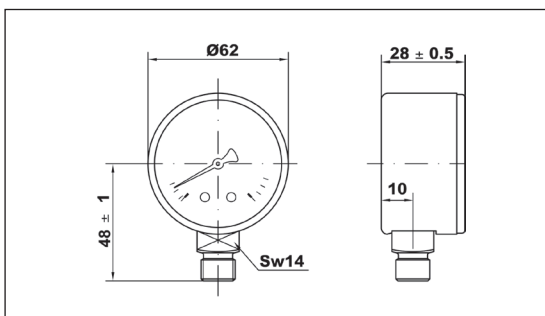
M1-40



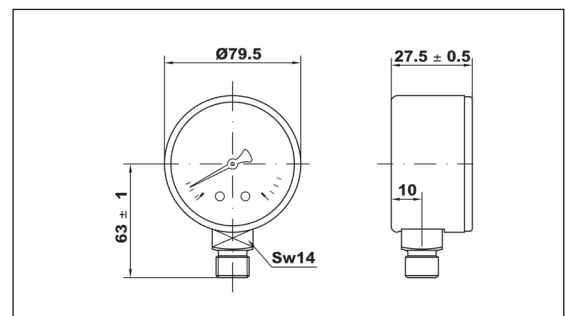
M1-50



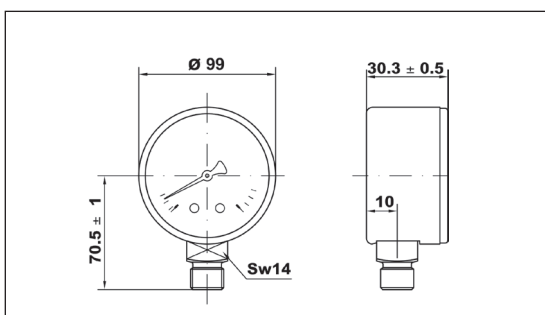
M1-63



M1-80



M1-100



Specification text

M1 Series

Bourdon tube pressure gauge **M1 Series**, WATTS Brand, for industrial applications, gases and not viscous not aggressive and not crystallizing liquid. **Dry black steel case** DN 40-50-63-80-100 mm, bottom entry. Vacuum measures range -1/0 at high pressure up to 400 bar. Temperature limits + 60°C. Accuracy class 1.6. **Compliant with EN 837-1.**

M1/T1 Series

Bourdon tube pressure gauge **M1/T1 Steam Series**, WATTS Brand, for industrial applications, gases and not viscous not aggressive and not crystallizing liquid. **Dry black steel case powder coated** DN 40-50-63-80-100 mm, **bottom entry**. Vacuum measures range from 2,5 to 25 bar. Temperature limits **+120°C**. Accuracy class 2,5. **Compliant with EN 837-1.**

M1/R Series

Bourdon tube pressure gauge **M1/R Series**, WATTS Brand, for heating applications, gases and not viscous, not aggressive and not crystallizing liquid. **Dry steel chrome case** DN 63-80 mm, bottom **entry, red adjustable pointer on window**. Vacuum measures range from 4 to 16 bar. Temperature limits + 60°C. Accuracy class 1.6. **Compliant with EN 837-1**

