

mod. GMB

Getto multiplo
quadrante bagnato
Multi jet-wet dial



SU RICHIESTA
ON REQUEST



Mod. GMB

Getto multiplo, quadrante bagnato, lettura diretta. Realizzato nella versione per acqua fredda (30°C) nei calibri da \varnothing 15 a 50 mm (1/2" \div 2"). Particolarmente adatto per installazioni domestiche e industriali. Garanzia di lunga durata ed elevata precisione.

Mod. GMB

Vielfachwasserstrahl, nasses Zifferblatt, Direktablesung. Produziert in der Version Kaltwasser (30°C) in den Durchmesser von 15 bis 50 mm (1/2 Zoll \div 2 Zoll). Besonders geeignet für Haus- und Industrieanlagen. Garantiert lange Haltbarkeit und erhöhte Genauigkeit.

Mod. GMB

Multi jet, wet dial, direct reading. Produced in the cold water version (30°C) in the diameters 15 to 50 mm (1/2" \div 2"). Particularly suitable for domestic and industrial installations. Long durability and elevated precision guaranteed.

Mod. GMB

Jet multiple, cadran noyé à lecture directe, disponible en la version pour eau froide (30°C) et dans les calibres de 15 à 50 mm (de 1/2" à 2"), particulièrement adapté à un usage domestique ou industriel, fiabilité dans le temps et précision élevée.

Mod. GMB

Chorro múltiple, esfera húmeda, lectura directa. Fabricado en la versiones para agua fría (30°C) en los calibres de \varnothing 15 a 50 mm (1/2" \div 2"). Particularmente adecuado para instalaciones domésticas y industriales. Garantía de larga duración y elevada precisión.

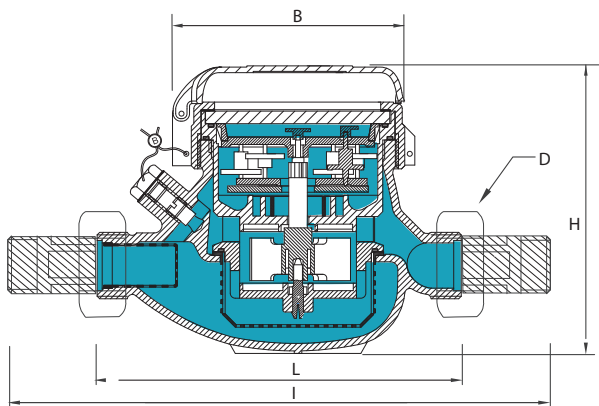
Мод. GMB

Многоструйный счетчик с мокрым квадрантом и прямым считыванием. Выпускается в версии для холодной (30°C) воды диаметрами условного прохода от 15 до 50 мм (1/2" – 2"). Пригоден для коммунального и промышленного применения. Гарантия долговечности и высокой точности.

Caratteristiche tecniche - Technical features

Calibro Size	DN	mm in	15 (1/2")	20 (3/4")	25 (1")	32 (1 1/4")	40 (1 1/2")	50 (2")
Portata Max Max Flow Rate	Q _{max}	m ³ /h	3	5	7	12	20	30
Portata nominale Nominal Flow Rate	Q _n	m ³ /h	1,5	2,5	3,5	6	10	15
Portata di transizione Transitional flow rate	Q _t ±2%	l/h	120	200	280	480	800	3000
Portata minima Min flow rate	Q _{min} ±5%	l/h	30	50	70	120	200	450
Sensibilità Sensitivity		l/h	10	14	17	27	46	75
Lettura minima Min reading		l	0,05	0,05	0,05	0,05	0,05	0,05
Lettura massima Max reading		m ³	99.999	99.999	99.999	99.999	999.999	999.999
Pressione max ammissibile Max admissible pres. MAP		bar	16	16	16	16	16	16

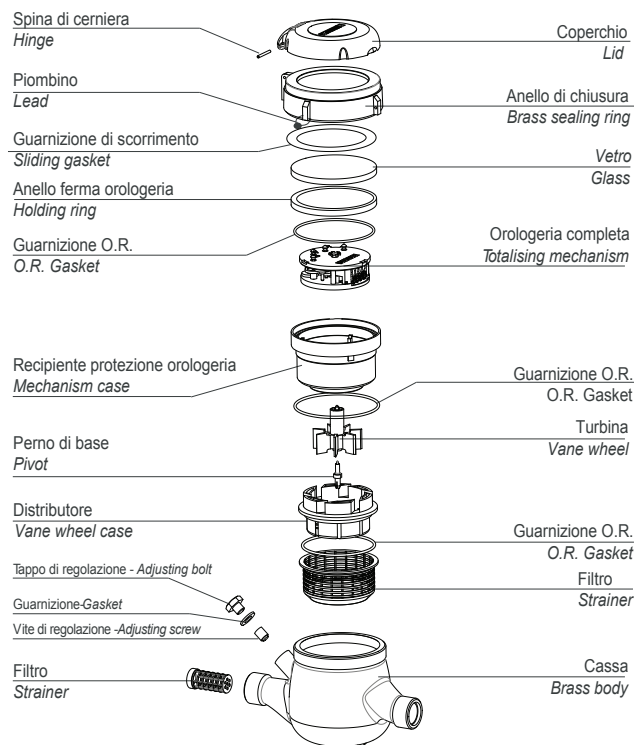
Dimensioni e pesi - Dimensions and Weights



Calibro Size	mm in	15 (1/2")	20 (3/4")	25 (1")	32 (1 1/4")	40 (1 1/2")	50 (2")
L	mm	145-165-190	190	260	260	300	300
l	mm	225-245-270	290	360	380	440	460
H	mm	109	111	117	117	153	172
B	mm	100	100	104	104	126	160
D <small>Filettatura Threading</small>	mm	3/4"	1"	1 1/4"	1 1/2"	2"	2 1/2"
Pesi Weight	kg	1,35	1,45	2,04	2,11	4,58	7,25

Filettatura - Threading UNI EN 14154-01

I contatori DN 50 possono essere forniti flangiati secondo UNI EN 1092-1:2007 PN 16
The DN50 meters can be supplied flanged according to UNI EN 1092-1:2007 PN 16



Versione base - Basic version

- Classe B-H CEE75/33 ISO4064
- Disponibile nella sola versione per acqua fredda 0°C-30°C
- Trasmissione meccanica
- Lettura diretta su 5 rulli numeratori protetti (6 rulli numeratori protetti su DN40 e DN50)
- Quadrante bagnato
- Con coperchio
- Class B-H CEE75/33 ISO4064
- Available for cold water 0°C-30°C only
- Mechanical transmission
- Direct reading on 5 numeric protected rolls (6 numeric protected rolls on DN40 and DN50)
- Wet dial
- With lid

Su richiesta - Upon request

- MID R100-H 2004/22/CE