

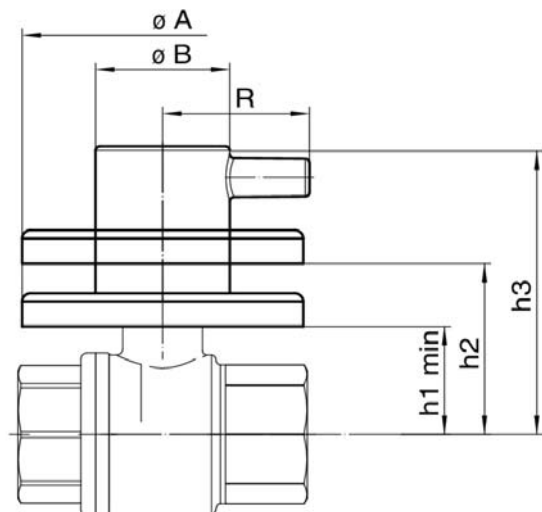
## 43F2

Leva 1 piolo e rosone cromati per artt. 4291-4391-4491-509091.



**NEW**

### Specifiche tecniche



| ART. | DN   | BOX | MASTER BOX | CODICE     | ØA | ØB | H1 MIN | H2   | H3 | KG   |
|------|------|-----|------------|------------|----|----|--------|------|----|------|
| 4291 | 1/2" | 10  | 40         | 43F2040000 | 67 | 32 | 23     | 38   | 66 | 0,08 |
| 4291 | 3/4" | 10  | 40         | 43F2040000 | 67 | 32 | 26     | 41   | 69 | 0,08 |
| 4391 | 1/2" | 10  | 40         | 43F2040000 | 67 | 32 | 22,5   | 37,5 | 66 | 0,08 |
| 4391 | 3/4" | 10  | 40         | 43F2040000 | 67 | 32 | 26     | 41   | 69 | 0,08 |
| 4391 | 1"   | 10  | 40         | 43F2040000 | 67 | 32 | 29,5   | 44,5 | 73 | 0,08 |

## Applicazioni



DRINKING  
WATER



HEATING



HVAC



COMPRESSED  
AIR



INDUSTRIAL



MARINE