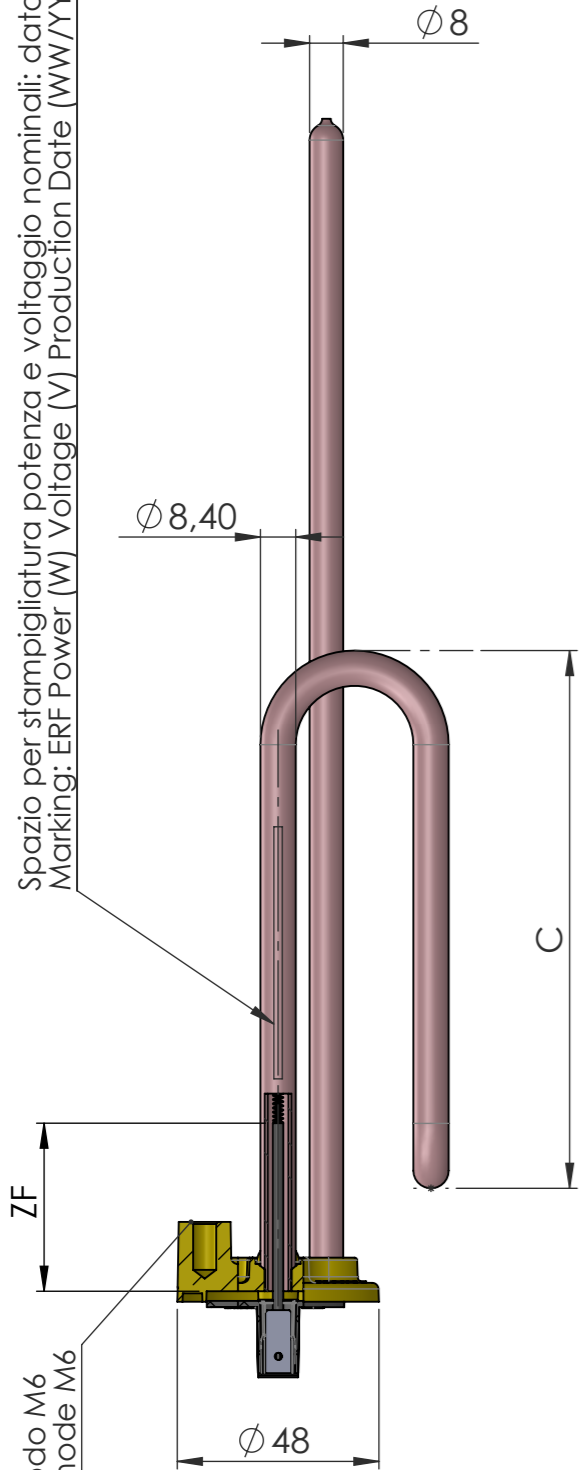
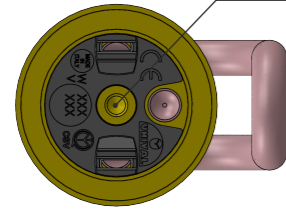


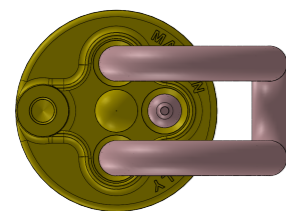
# Codice Dianflex: 402-TUS328

Spazio per stampigliatura potenza e voltaggio nominali: data di produzione  
 Marking: ERF Power (W) Voltage (V) Production Date (WW/YY) UNIVAL

Filettatura M6  
 M6 Thread



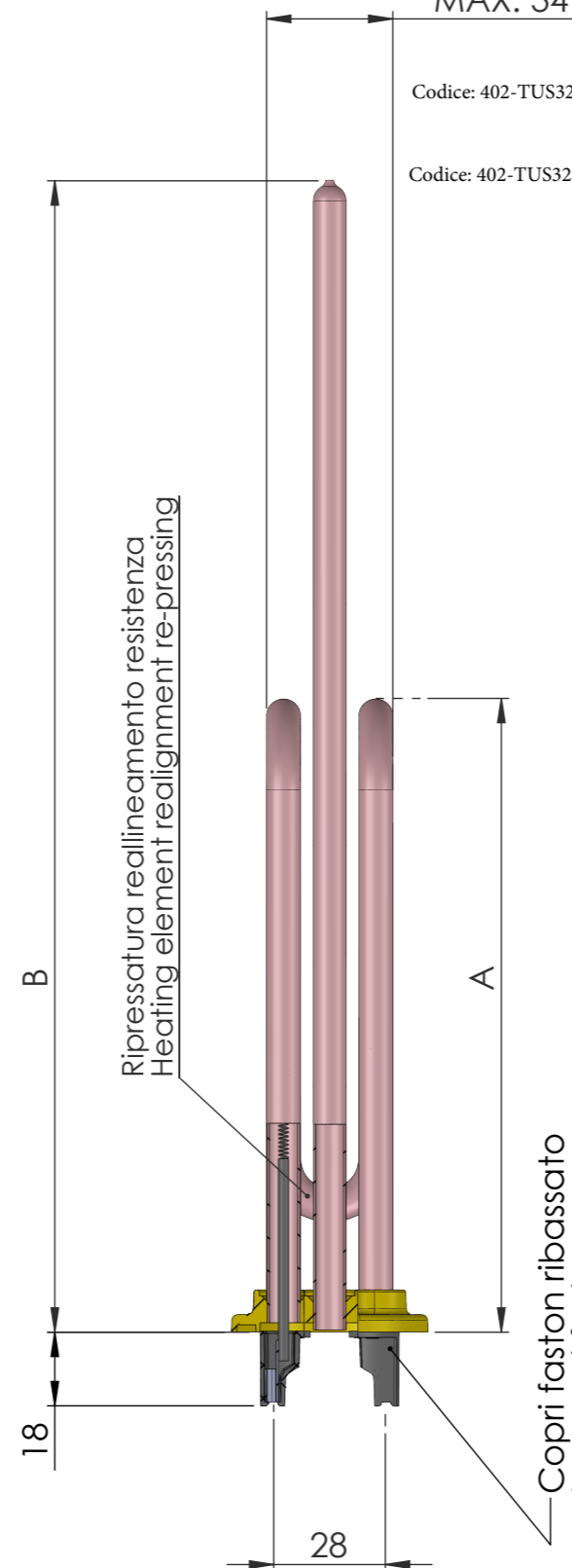
Porta anodo M6  
 Pocket anode M6



MAX. 34

Codice: 402-TUS328-1200

Codice: 402-TUS328-2500



Ripressatura realineamento resistenza  
 Heating element realignment re-pressing

Copri faston ribassato  
 Lowered faston cover

| TOLERANCE CLASS | LINEAR MEASURES |           |            |              |                | EXTERNAL RADII AND CHAMFER HEIGHTS |           |       | ANGULAR MEASURES |             |              |               |
|-----------------|-----------------|-----------|------------|--------------|----------------|------------------------------------|-----------|-------|------------------|-------------|--------------|---------------|
|                 | 0,5 upto 3      | >3 upto 6 | >6 upto 30 | >30 upto 120 | >400 upto 1000 | 0,5 upto 3                         | >3 upto 6 | >6    | 0,5 upto 10      | >10 upto 50 | >50 upto 120 | >120 upto 400 |
| □ fine(f)       | ±0,05           | ±0,05     | ±0,10      | ±0,15        | ±0,50          | ±0,20                              | ±0,50     | ±1,00 | ±1°00'           | ±0°30'      | ±0°20'       | ±0°10'        |
| □ medium(m)     | ±0,10           | ±0,10     | ±0,20      | ±0,30        | ±1,20          |                                    |           |       | ±1°30'           | ±1°00'      | ±0°30'       | ±0°15'        |
| □ coarse(c)     | ±0,15           | ±0,20     | ±0,50      | ±0,80        | ±3,00          |                                    |           |       | ±0,40            | ±1,00       | ±2,00        |               |

| Codice/Code | Descrizione/Description                        | Watt (+5/-10 %) | Volt (V~) | ZF (mm) +10/-0                | A (mm) +/-10 | B (mm) +/-5 | C (mm) +/-10 | L tubo/Tube (mm) | W/cm2 | CopriFaston/Faston Cover | Marchatura Tubo/Tube Marking  |
|-------------|--|-----------------|-----------|-------------------------------|--------------|-------------|--------------|------------------|-------|--------------------------|-------------------------------|
|             | HU UNIVAL ERF mod 328 CURVED 1000W 220V PA     | 1000            | 220       |                               |              |             |              |                  | 6.7   | Black                    | ERF 1000W 220V WW/YY UNI      |
|             | HU UNIVAL ERF mod 328 CURVED 1200W 220V PA     | 1200            |           |                               |              |             |              |                  | 8.1   |                          | ERF 1200W 220V WW/YY UNI      |
|             | HU UNIVAL ERF mod 328 CURVED 1500W 220V PA     | 1500            |           |                               |              |             |              |                  | 10.1  |                          | ERF 1500W 220V WW/YY UNI      |
|             | HU UNIVAL ERF mod 328 CURVED 2000W 220V PA     | 2000            |           |                               |              |             |              |                  | 13.5  |                          | ERF 2000W 220V WW/YY UNI      |
|             | HU UNIVAL ERF mod 328 CURVED 2500W 220V PA     | 2500            |           |                               |              |             |              |                  | 16.9  |                          | ERF 2500W 220V WW/YY UNI      |
|             | HU UNIVAL ERF mod 328 CURVED 1000W 230V PA     | 1000            | 230       | 40                            | 147          | 280         | 119          | 562              | 6.7   | Black                    | ERF 1000W 230V WW/YY UNI      |
|             | HU UNIVAL ERF mod 328 CURVED 1200W 230V PA     | 1200            |           |                               |              |             |              |                  | 8.1   |                          | ERF 1200W 230V WW/YY UNI      |
|             | HU UNIVAL ERF mod 328 CURVED 1500W 230V PA     | 1500            |           |                               |              |             |              |                  | 10.1  |                          | ERF 1500W 230V WW/YY UNI      |
|             | HU UNIVAL ERF mod 328 CURVED 2000W 230V PA     | 2000            |           |                               |              |             |              |                  | 13.5  |                          | ERF 2000W 230V WW/YY UNI      |
|             | HU UNIVAL ERF mod 328 CURVED 2500W 230V PA     | 2500            |           |                               |              |             |              |                  | 16.9  |                          | ERF 2500W 230V WW/YY UNI      |
|             | HU UNIVAL ERF mod 328 CURVED 1000W 220-240V PA | 1000            | 220-240   |                               |              |             |              |                  | 6.7   | Black                    | ERF 1000W 220V-240V WW/YY UNI |
| 0328G1263E  | HU UNIVAL ERF mod 328 CURVED 1200W 220-240V PA | 1200            |           |                               |              |             |              |                  | 8.1   |                          | ERF 1200W 220V-240V WW/YY UNI |
| 032871563E  | HU UNIVAL ERF mod 328 CURVED 1500W 220-240V PA | 1500            |           |                               |              |             |              |                  | 10.1  |                          | ERF 1500W 220V-240V WW/YY UNI |
| 032872063E  | HU UNIVAL ERF mod 328 CURVED 2000W 220-240V PA | 2000            |           |                               |              |             |              |                  | 13.5  |                          | ERF 2000W 220V-240V WW/YY UNI |
| 032872563E  | HU UNIVAL ERF mod 328 CURVED 2500W 220-240V PA | 2500            |           |                               |              |             |              |                  | 16.9  |                          | ERF 2500W 220V-240V WW/YY UNI |
|             | HU UNIVAL ERF mod 328 CURVED 1000W 220V PA     | 1000            | 220       |                               |              |             |              |                  | 6.4   | Black                    | ERF 1000W 220V WW/YY UNI      |
|             | HU UNIVAL ERF mod 328 CURVED 1200W 220V PA     | 1200            |           |                               |              |             |              |                  | 7.7   |                          | ERF 1200W 220V WW/YY UNI      |
|             | HU UNIVAL ERF mod 328 CURVED 1500W 220V PA     | 1500            |           |                               |              |             |              |                  | 9.6   |                          | ERF 1500W 220V WW/YY UNI      |
|             | HU UNIVAL ERF mod 328 CURVED 2000W 220V PA     | 2000            |           |                               |              |             |              |                  | 12.8  |                          | ERF 2000W 220V WW/YY UNI      |
|             | HU UNIVAL ERF mod 328 CURVED 2500W 220V PA     | 2500            |           |                               |              |             |              |                  | 16.0  |                          | ERF 2500W 220V WW/YY UNI      |
|             | HU UNIVAL ERF mod 328 CURVED 1000W 230V PA     | 1000            | 230       | 40                            | 155          | 280         | 127          | 593              | 6.4   | Black                    | ERF 1000W 230V WW/YY UNI      |
|             | HU UNIVAL ERF mod 328 CURVED 1200W 230V PA     | 1200            |           |                               |              |             |              |                  | 7.7   |                          | ERF 1200W 230V WW/YY UNI      |
|             | HU UNIVAL ERF mod 328 CURVED 1500W 230V PA     | 1500            |           |                               |              |             |              |                  | 9.6   |                          | ERF 1500W 230V WW/YY UNI      |
|             | HU UNIVAL ERF mod 328 CURVED 2000W 230V PA     | 2000            |           |                               |              |             |              |                  | 12.8  |                          | ERF 2000W 230V WW/YY UNI      |
|             | HU UNIVAL ERF mod 328 CURVED 2500W 230V PA     | 2500            |           |                               |              |             |              |                  | 16.0  |                          | ERF 2500W 230V WW/YY UNI      |
|             | HU UNIVAL ERF mod 328 CURVED 1000W 220-240V PA | 1000            | 220-240   |                               |              |             |              |                  | 6.4   | Black                    | ERF 1000W 220V-240V WW/YY UNI |
|             | HU UNIVAL ERF mod 328 CURVED 1200W 220-240V PA | 1200            |           |                               |              |             |              |                  | 7.7   |                          | ERF 1200W 220V-240V WW/YY UNI |
|             | HU UNIVAL ERF mod 328 CURVED 1500W 220-240V PA | 1500            |           |                               |              |             |              |                  | 9.6   |                          | ERF 1500W 220V-240V WW/YY UNI |
| 0328G2063P  | HU UNIVAL ERF mod 328 CURVED 2000W 220-240V PA | 2000            |           |                               |              |             |              |                  | 12.8  |                          | ERF 2000W 220V-240V WW/YY UNI |
|             | HU UNIVAL ERF mod 328 CURVED 2500W 220-240V PA | 2500            |           |                               |              |             |              |                  | 16.0  |                          | ERF 2500W 220V-240V WW/YY UNI |
|             | HU UNIVAL ERF mod 328 CURVED 1000W 220V PA     | 1000            | 220       |                               |              |             |              |                  | 5.9   | Black                    | ERF 1000W 220V WW/YY UNI      |
|             | HU UNIVAL ERF mod 328 CURVED 1200W 220V PA     | 1200            |           |                               |              |             |              |                  | 7.1   |                          | ERF 1200W 220V WW/YY UNI      |
|             | HU UNIVAL ERF mod 328 CURVED 1500W 220V PA     | 1500            |           |                               |              |             |              |                  | 8.9   |                          | ERF 1500W 220V WW/YY UNI      |
|             | HU UNIVAL ERF mod 328 CURVED 2000W 220V PA     | 2000            |           |                               |              |             |              |                  | 11.8  |                          | ERF 2000W 220V WW/YY UNI      |
|             | HU UNIVAL ERF mod 328 CURVED 2500W 220V PA     | 2500            |           |                               |              |             |              |                  | 14.8  |                          | ERF 2500W 220V WW/YY UNI      |
|             | HU UNIVAL ERF mod 328 CURVED 3000W 220V PA     | 3000            | 17.8      | ERF 3000W 220V WW/YY UNI      |              |             |              |                  |       |                          |                               |
|             | HU UNIVAL ERF mod 328 CURVED 1000W 230V PA     | 1000            | 230       | 40                            | 167          | 280         | 139          | 640              | 5.9   | Black                    | ERF 1000W 230V WW/YY UNI      |
|             | HU UNIVAL ERF mod 328 CURVED 1200W 230V PA     | 1200            |           |                               |              |             |              |                  | 7.1   |                          | ERF 1200W 230V WW/YY UNI      |
|             | HU UNIVAL ERF mod 328 CURVED 1500W 230V PA     | 1500            |           |                               |              |             |              |                  | 8.9   |                          | ERF 1500W 230V WW/YY UNI      |
|             | HU UNIVAL ERF mod 328 CURVED 2000W 230V PA     | 2000            |           |                               |              |             |              |                  | 11.8  |                          | ERF 2000W 230V WW/YY UNI      |
|             | HU UNIVAL ERF mod 328 CURVED 2500W 230V PA     | 2500            |           |                               |              |             |              |                  | 14.8  |                          | ERF 2500W 230V WW/YY UNI      |
|             | HU UNIVAL ERF mod 328 CURVED 3000W 230V PA     | 3000            | 17.8      | ERF 3000W 230V WW/YY UNI      |              |             |              |                  |       |                          |                               |
|             | HU UNIVAL ERF mod 328 CURVED 1000W 220-240V PA | 1000            | 220-240   |                               |              |             |              |                  | 5.9   | Black                    | ERF 1000W 220V-240V WW/YY UNI |
|             | HU UNIVAL ERF mod 328 CURVED 1200W 220-240V PA | 1200            |           |                               |              |             |              |                  | 7.1   |                          | ERF 1200W 220V-240V WW/YY UNI |
|             | HU UNIVAL ERF mod 328 CURVED 1500W 220-240V PA | 1500            |           |                               |              |             |              |                  | 8.9   |                          | ERF 1500W 220V-240V WW/YY UNI |
|             | HU UNIVAL ERF mod 328 CURVED 2000W 220-240V PA | 2000            |           |                               |              |             |              |                  | 11.8  |                          | ERF 2000W 220V-240V WW/YY UNI |
|             | HU UNIVAL ERF mod 328 CURVED 2500W 220-240V PA | 2500            |           |                               |              |             |              |                  | 14.8  |                          | ERF 2500W 220V-240V WW/YY UNI |
|             | HU UNIVAL ERF mod 328 CURVED 3000W 220-240V PA | 3000            | 17.8      | ERF 3000W 220V-240V WW/YY UNI |              |             |              |                  |       |                          |                               |
|             | HU UNIVAL ERF mod 328 CURVED 2000W 220V PA     | 2000            | 220       |                               |              |             |              |                  | 8.9   | Black                    | ERF 2000W 220V WW/YY UNI      |
|             | HU UNIVAL ERF mod 328 CURVED 2500W 220V PA     | 2500            |           |                               |              |             |              |                  | 11.2  |                          | ERF 2500W 220V WW/YY UNI      |
|             | HU UNIVAL ERF mod 328 CURVED 3000W 220V PA     | 3000            |           |                               |              |             |              |                  | 13.4  |                          | ERF 3000W 220V WW/YY UNI      |
|             | HU UNIVAL ERF mod 328 CURVED 2000W 230V PA     | 2000            |           |                               |              |             |              |                  | 8.9   |                          | ERF 2000W 230V WW/YY UNI      |
|             | HU UNIVAL ERF mod 328 CURVED 2500W 230V PA     | 2500            |           |                               |              |             |              |                  | 11.2  |                          | ERF 2500W 230V WW/YY UNI      |
|             | HU UNIVAL ERF mod 328 CURVED 3000W 230V PA     | 3000            | 13.4      | ERF 3000W 230V WW/YY UNI      |              |             |              |                  |       |                          |                               |
|             | HU UNIVAL ERF mod 328 CURVED 4000W 230V PA     | 4000            | 17.9      | ERF 4000W 230V WW/YY UNI      |              |             |              |                  |       |                          |                               |
|             | HU UNIVAL ERF mod 328 CURVED 2000W 220-240V PA | 2000            | 220-240   |                               |              |             |              |                  | 8.9   | Black                    | ERF 2000W 220V-240V WW/YY UNI |
|             | HU UNIVAL ERF mod 328 CURVED 2500W 220-240V PA | 2500            |           |                               |              |             |              |                  | 11.2  |                          | ERF 2500W 220V-240V WW/YY UNI |
|             | HU UNIVAL ERF mod 328 CURVED 3000W 220-240V PA | 3000            |           |                               |              |             |              |                  | 13.4  |                          | ERF 3000W 220V-240V WW/YY UNI |
|             | HU UNIVAL ERF mod 328 CURVED 4000W 220-240V PA | 4000            |           |                               |              |             |              |                  | 17.9  |                          | ERF 4000W 220V-240V WW/YY UNI |
|             | HU UNIVAL ERF mod 328 CURVED 2000W 230V PA     | 2000            |           |                               |              |             |              |                  | 8.9   |                          | ERF 2000W 230V WW/YY UNI      |

Descrizione - Description

**Elemento riscaldante ERF mod.328 curvo PA**  
 Heating element ERF mod.328 curved PA

Scheda tecnica - Data sheet

Codice catalogo - Catalogue code  
**ART.328**

Codice articolo - Article code

Disegnato - Designed  
 PALETTI M.

Data emissione - Issue date  
 01/12/2023 Rev.02

Questo disegno è di proprietà della UNIVAL srl. è vietata a termini di legge la riproduzione e divulgazione  
 This drawing is the property of UNIVAL srl. reproduction and disclosure is prohibited by law